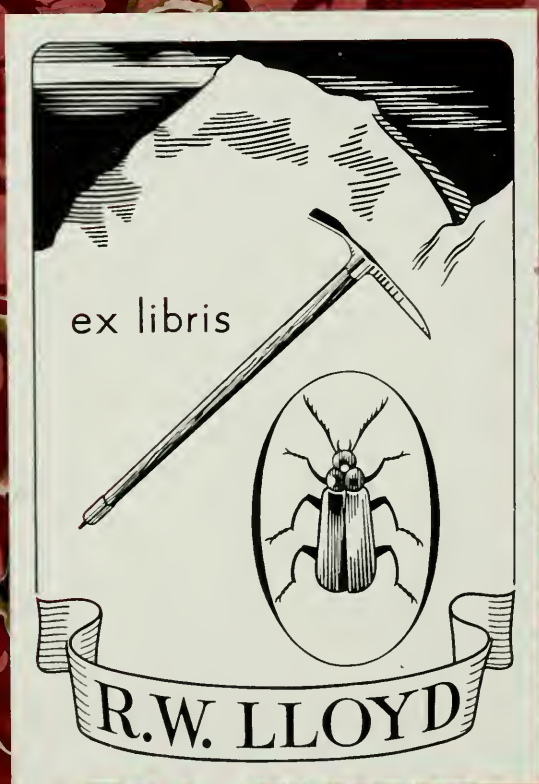
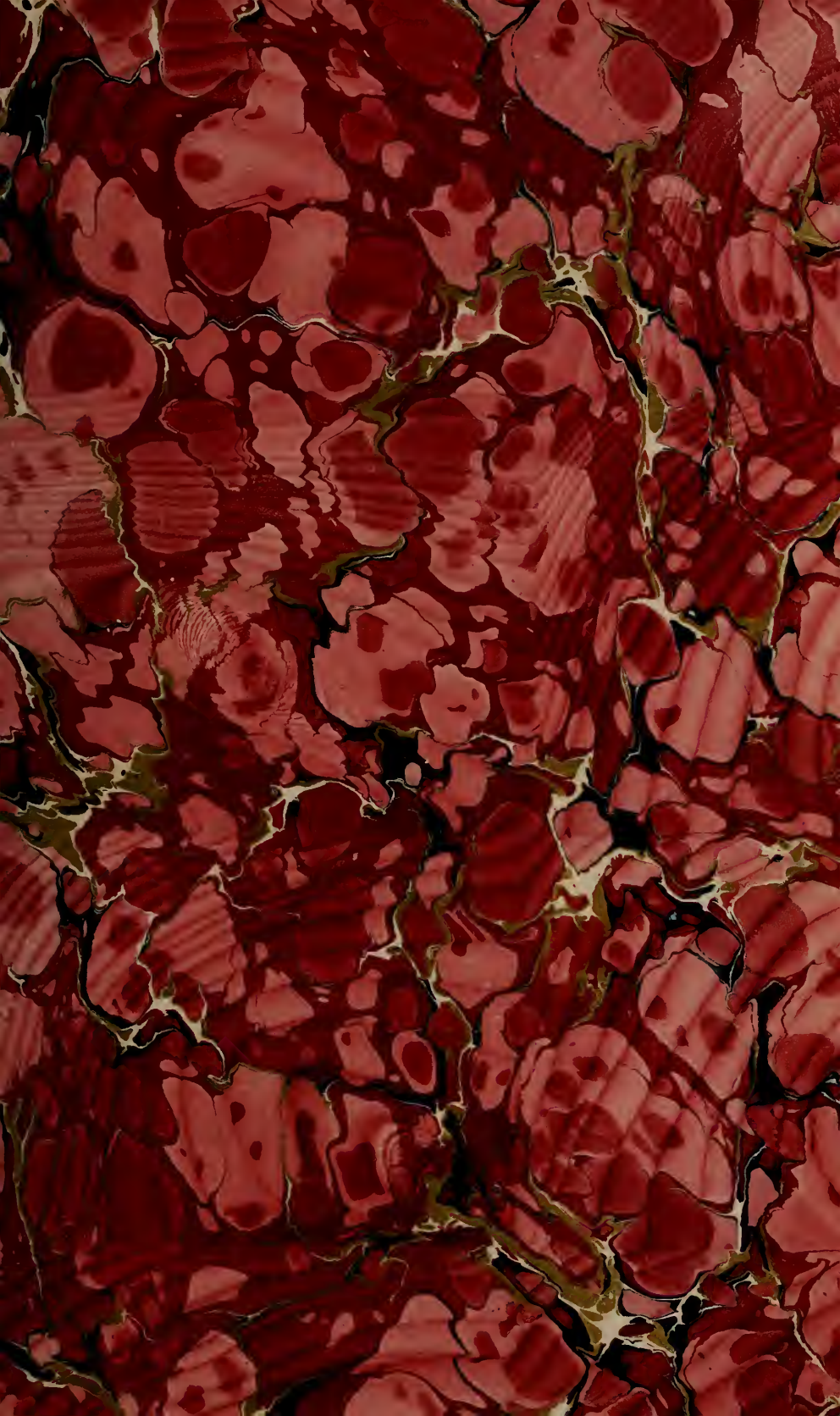


2/28/91
to
7/27/91





PICTURES AND SCULPTURE

OF

THE MOST HON

THE MARQUIS OF ELY.

CATALOGUE

OF

THE COLLECTION OF

PICTURES AND SCULPTURE

OF

THE MOST HON.

THE MARQUIS OF ELY,

Removed from Loftus Hall, Co. Wexford;

PICTURES

THE PROPERTY OF

GENERAL SIR FRANCIS SEYMOUR, K.C.B.,

DECEASED,

AND OTHERS, FROM DIFFERENT PRIVATE COLLECTIONS;

ALSO,

Fine ITALIAN BRONZES, of the 16th Century, of
Bacchus and Venus, from Prince Napoleon's
Collection, &c., &c.:

WHICH

Will be Sold by Auction, by

MESSRS. CHRISTIE, MANSON & WOODS,

AT THEIR GREAT ROOMS,

8 KING STREET, ST. JAMES'S SQUARE,

On SATURDAY, JULY 25, 1891,

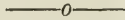
AT ONE O'CLOCK PRECISELY.

May be viewed Two Days preceding, and Catalogues had, at
MESSRS. CHRISTIE, MANSON and Woods' Offices, 8 King Street,
St. James's Square, S.W.

LUSO 165

1891
July 25
Loche

CONDITIONS OF SALE.



- I. THE highest Bidder to be the Buyer; and if any dispute arise between two or more Bidders, the Lot so in dispute shall be immediately put up again and re-sold.
- II. No person to advance less than 1s.; above Five Pounds, 5s.; and so on in proportion.
- III. In the case of Lots upon which there is a reserve, the Auctioneer shall have the right to bid on behalf of the Seller.
- IV. The Purchasers to give in their Names and Places of Abode, and to pay down 5s. in the Pound, or more, in part of payment, or the whole of the Purchase-Money, *if required*; in default of which, the Lot or Lots so purchased to be immediately put up again and re-sold.
- V. The Lots to be taken away and paid for, whether genuine and authentic or not, with all faults and errors of description, at the Buyer's expense and risk, within Two days from the Sale; MESSRS. CHRISTIE, MANSON and WOODS not being responsible for the correct description, genuineness, or authenticity of, or any fault or defect in, any Lot; and making no warranty whatever
- VI. To prevent inaccuracy in delivery, and inconvenience in the settlement of the Purchases, no Lot can on any account be removed during the time of Sale; and the remainder of the Purchase-Money must absolutely be paid on the delivery.
- VII. Upon failure of complying with the above Conditions, the Money deposited in part of payment shall be forfeited; all Lots un-cleared within the time aforesaid shall be re-sold by public or private Sale, and the deficiency (if any) attending such re-sale shall be made good by the Defaulter at this Sale.

CATALOGUE.

On SATURDAY, JULY 25, 1891,

AT ONE O'CLOCK PRECISELY.

*The following are Sold by order of the Trustees of
THE MOST HON. THE MARQUIS OF ELY.*

PICTURES.

1 SUMMER AND WINTER—a pair	2
2 ARCHITECTURE AND FIGURES—a pair	2
3 A PAIR OF LANDSCAPES, with figures and horses ; and a Village Scene	3
4 ST. JEROME ; and another Saint	2
5 AN OLD PEASANT	
6 A BOY, with lighted candle	
7 A MAN, in black cap	
8 THE MAGDALEN	
9 NAPOLEON I.	
10 THE BATTLE OF THE BOYNE	

HUGHES.

11 A COAST SCENE AND A WINTER SCENE	2
-------------------------------------	---

B. CHALON, 1809.

12 PORTRAIT OF A SETTER

TENIERS.

13 PEASANTS PLAYING CARDS

ZEEMAN.

14 A COAST SCENE, with a castle and shipping

A. GRYEFF.

15 A LANDSCAPE, with dead game and implements of the chase

VAN HUYSUM (AFTER).

16 A VASE OF FLOWERS AND FRUIT, on a marble slab
Painted on slate

BOUT AND BOUWYNS.

17 A PAIR OF RIVER SCENES, with figures and animals—*on copper* 2

18 A PAIR OF ITALIAN COAST SCENES, with figures 2

19 A LANDSCAPE, with cattle and figures at a fountain

V. VAN DE VELDEN.

20 THE DUTCH FLEET, off Dort
Signed, and dated 1728

WILDENS

21 A LANDSCAPE, with the Temptation

NOGARI.

22 MALE AND FEMALE HEADS—*a pair* 2
after those at Dresden.

DE WITTE.

23 THE RAISING OF LAZARUS

WOUVERMANS (AFTER).

24 A CAMP SCENE

POLEMBERG.

25 NYMPHS BATHING
3150

VAN DER WERFF (AFTER).

26 A WOMAN with a lighted candle
157

P. WOUVERMANS.

27 CAVALIERS HALTING AT A SUTLER'S BOOTH
Lessa.

TENIERS.

28 THE ARTIST AT HIS CHATEAU
5

G. DOW.

29 THE DENTIST
6 1/2

VAN DE CAPELLA.

30 A COAST SCENE, with boats in shallow water, and figures on a
jetty
225

RUBENS.

31 THE MARQUIS SPINOLA, in ruff and armour, wearing the Golden
Fleece (Xie's 11.2.11 (52) as c de Vos)
37 gas

REMBRANDT.

- 32 AN OLD WOMAN, in red dress trimmed with fur, and white
napkin head-dress, holding a book

REMBRANDT.

- 33 AN OLD MAN, in black dress and cap, holding a pair of spec-
tacles in his right hand

SNYDERS (AFTER).

- 34 A BOAR HUNT

CORREGGIO (AFTER).

- 35 THE READING MAGDALEN

GUIDO (AFTER).

- 36 BEATRICE CENCI

RAFFAELLE.

- 37 THE HOLY FAMILY AND ST. JOHN : a replica of the picture in
Lord Carlisle's Collection

RAFFAELLE (AFTER).

- 38 APOLLO AND THE MUSES

RAFFAELLE (AFTER).

- 39 THE MADONNA DELLA SEDIA, by O. Mazzolini

PORTRAITS.

- 40 THE CAPTAIN OF THE YACHT
- 41 A LADY IN A GARDEN
- 42 QUEEN ELIZABETH
- 43 EARL OF STRAFFORD, after VANDYCK
- 44 A GENERAL IN ARMOUR—*temp. Queen Anne*
- 45 A GENTLEMAN IN BROWN DRESS—*temp. George I.*
- 46 A LADY, seated, with an infant
- 47 GEORGE III.—*oval*
- 48 A GENTLEMAN IN EMBROIDERED COAT
- 49 A GENTLEMAN, after Sir T. Lawrence
- 50 THE MARQUIS OF WHARTON, 1715
- 51 LUCIA LOFTUS, MARCHIONESS OF WHARTON—1715
- 52 NICHOLAS LOFTUS HUME, EARL OF ELY—1767
- 53 NICHOLAS LOFTUS HUME, EARL OF ELY
- 54 NICHOLAS LORD LOFTUS, FIRST EARL OF ELY—1739
- 55 ADAM LOFTUS, ARCHBISHOP OF ARMAGH, Lord Chancellor and Primate of all Ireland, Founder of Trinity College, Dublin, with the purse of Queen Elizabeth
- 56 ADAM LOFTUS, ARCHBISHOP OF ARMAGH, Lord Chancellor and Primate of all Ireland, Founder of Trinity College, Dublin, with the purse of King James I.—1619—*whole length*
- 57 NICHOLAS LOFTUS, Surveyor of His Majesty's Courts, Wards and Liveries—*dated* 1648 ; and a Lady holding a watch—*a pair*
- 58 HENRY LOFTUS—*dated* 1680
- 59 WILLIAM III., in the robes of the Garter—*whole length*
- 60 GEORGE I., in the robes of the Garter—*whole length*

309
61 CHARLES TOTTENHAM, Esq., M.P., of Tottenham Green, County
Wexford, so well known as "Tottenham in his Boots" 209

59
62 JOHN PONSONBY, Speaker of the Irish House of Commons, 1762-
1779

VAN DYCK (AFTER).

40
63 PORTRAITS OF CHARLES I. AND HENRIETTA MARIA, by W. SMITH
From the pictures at Blenheim 2

SIR J. REYNOLDS (AFTER).

25
64 THE MARQUIS OF ELY, in his robes of the Order of St. Patrick—
whole length

LELY.

65 LADY ALICIA HUME

A. KAUFFMANN, R.A., 1768.

259
66 HENRY, EARL OF ELY, in fancy dress—*whole length*

A. KAUFFMANN, R.A., 1768.

21
67 MISS MUNRO, in white dress with blue scarf

SIR T. LAWRENCE.

220
68 ANNA MARIA, WIFE OF JOHN, SECOND MARQUIS OF
ELY, Daughter of Sir H. Dashwood, Bart. 209

SIR T. LAWRENCE.

25
69 JOHN, SECOND MARQUIS OF ELY

SIR T. LAWRENCE.

70 PORTRAIT OF THE DUKE OF WELLINGTON

269a

H. Lawrence

J. HOPPNER, R.A. (AFTER).

71 THE RIGHT HON. W. PITT, by J. Jackson, R.A.

169a

J. Jackson

SIR J. REYNOLDS.

72 THE EARL AND COUNTESS OF ELY—*whole length*

Henry, First Earl of Ely, born 1709, created Earl of Ely 1771, K.P. 1783; and his second wife, Anne, daughter of Hugh Bonnefoy, Esq.

620
9a

J. Reynolds

CAPALTI, 1845.

73 JANE, MARCHIONESS OF ELY

SCULPTURE.

74 BUST OF NICHOLAS LOFTUS HUME, EARL OF ELY

75 BUST OF JOHN LOCKE

76 BUST OF A LADY—*of Italian work of XV. century*77 BUST OF A PRIEST—*of Italian work of XV. century*78 BUST OF THE EMPEROR LUCIUS VERUS—*of Roman work*—with drapery of coloured alabaster

79 BUST OF THE EMPRESS JULIA DOMNA, with drapery of coloured alabaster

80 BUST OF THE EMPEROR AUGUSTUS, with similar drapery

81 A ROMAN IMPERIAL MALE BUST—on black marble socle

- 82 BUST OF THE EMPRESS FAUSTINA
 83 A ROMAN IMPERIAL MALE BUST, crowned with bays
 84 A PAIR OF SMALL ROMAN MALE BUSTS
 85 AN OVAL CISTERN, with mask handles, and carved with marine deities
 86 A PAIR OF PEDESTALS, of statuary marble, with panels of red marble, and carvings of drapery
 87 A PAIR OF DITTO, with panels of coloured marble
 88 A PAIR OF DITTO, with panels of Verd-antique
 89 A SQUARE MARBLE PEDESTAL
 90 A Sienna Scagliola Pedestal
-

*The following are Sold by Order of the High Court of
 Justice, Chancery Division.*

Trau v. Wareham and another.

BRONZES.

- 91 A STATUE OF BACCHUS, life-size, holding in his hands a bunch of grapes and a cup, an infant satyr at his feet
 92 A STATUE OF VENUS, life-size, holding a shell in one hand, a dolphin at her feet

These remarkable specimens of Italian Art of the 16th Century were formerly in Duke Litta's Palace, Milan, and afterwards in the Prince Napoleon's Collection, who removed them to this country from the Villa Prangino, on the Lake of Geneva

A DIFFERENT PROPERTY.

SIR THOMAS LAWRENCE, P.R.A.

93 MISS MURRAY (Louisa Georgina Augusta Anne), only daughter of the Rt. Hon. General Sir George Murray, M.P., G.C.B., &c., &c., Niece of the Marquis of Anglesey

The celebrated chef-d'œuvre. Engraved by G. T. Doo, R.A., in 1834, and by G. H. Phillips, in 1839, for the Lawrence work

Engraved as "The Child and Flowers," by W. Humphreys, in the Bijou, 1828, with verses by Mrs. Hemans

SIR T. LAWRENCE, P.R.A.

94 PORTRAIT OF THE RT. HON. GENERAL SIR GEORGE MURRAY, M.P., G.C.B., &c., &c., left unfinished by the artist

J. P. KNIGHT, R.A.

95 THE LATE MARQUIS OF ANGLESEY, in uniform of the 7th Hussars, of which he was Colonel

SIR W. BEECHEY, R.A.

96 PORTRAITS OF KING GEORGE III. AND QUEEN CHARLOTTE

Small whole length—a pair

97 HON. SIR B. HOTHAM, one of the Barons of the Court of Exchequer,

£2.15.0

SIR J. REYNOLDS.

98 SIR PATRICK BLAKE, BART.: whole length, in a red coat, with blue lapels, white waistcoat, breeches, and gaiters, a hawk on his wrist

Painted 1766

Described in Leslie and Taylor's 'Life of Sir J. Reynolds,' Vol. I. page 252

T. GAINSBOROUGH, R.A.

242 Jan
99 PORTRAIT OF A LADY—*oval*

T. GAINSBOROUGH, R.A.

415
100 PORTRAIT OF WILLIAM THOMAS LEWIS, THE ACTOR

GAINSBOROUGH.

101 PORTRAIT OF A LADY

G. ROMNEY.

21
102 MIRTH AND MELANCHOLY

SIR JOSHUA REYNOLDS.

42
103 JEREMIAH DYSON, Clerk to the House of Commons

Painted in 1760

Catnach

A. CANALETTO.

580
104 THE GRAND CANAL, VENICE, with the Church of
Sta. Maria della Salute and the Dogana

*Formerly in the Collection of the late Mrs. Danby Harcourt
at Swinton Park, Yorkshire*

TINTORETTO.

29 Jan
105 WAR GALLEYS

*From the Collection of the late Rt. Hon. G. F. Cavendish-
Bentinck, M.P., P.C.*

Poling hi
TENIERS.

106 BOORS IN A COURTYARD

CLAUDE.

- 107 A LANDSCAPE, with ruins, figures, and animals
From the Collection of the Earl of Scarborough, 1807

SIR P. LELY.

- 108 ANNE HYDE, DUCHESS OF YORK
From the same Collection

MIGNARD.

- 109 A CHILD, WITH A WREATH OF FLOWERS

HONDIKOETER.

- 110 INTERIOR OF A LARDER, WITH DEAD GAME

R. WESTALL, R.A.

- 111 CUPID AND PSYCHE

VELASQUEZ.

- 112 EQUESTRIAN PORTRAIT OF A SPANISH PRINCE

R. WILSON.

- 113 VIEW OF TIVOLI

CUYP.

- 114 A SEA-SHORE, with figures and boats

SIR P. LELY.

- 115 PORTRAIT OF A LADY

PORTRAITS.

- 117 WILLIAM III., WHEN PRINCE OF ORANGE
 118 PRINCE RUPERT
 119 PETER PINDAR
 120 A VENETIAN NOBLEMAN

GREUZE (STYLE OF).

- 121 A PAIR OF ILLUSTRATIONS

BOUCHER.

- 122 A GIRL WATERING FLOWERS—*oval*

FRAGONARD.

- 123 A LADY IN A GARDEN

DROUAIS.

- 124 A LADY WITH A DOG

J. B. WEENIX.

- 125 A GARDEN OF A PALACE, with dead game, peacock, flowers and fruit

HACKAERT.

- 126 A GRAND LANDSCAPE, with travellers on a road, and cattle going to a stream

A. WATERLOO.

- 127 A LANDSCAPE, with figures

*The following are Sold by Order of the Executors of
GENERAL SIR FRANCIS SEYMOUR, K.C.B.,
Deceased.*

PICTURES.

- 128 A RIVER SCENE, with a church
129 A RIVER SCENE, with horsemen
130 A LANDSCAPE, with muleteers
131 A LANDSCAPE, with figures and goats
132 A LAKE SCENE, with ruined castle
133 A RIVER SCENE, with soldiers
134 PORTRAIT OF A NOBLEMAN
135 A GENTLEMAN IN A RUFF
136 KING CHARLES I.

B. BARKER.

- 137 A WOOD-GATHERER

RATHBONE.

- 138 A RIVER SCENE

J. MASON.

- 139 MY LORD'S CARRIAGE

SMITH.

- 140 A RIVER SCENE

E. TANNER.

- 141 A COAST SCENE

CARMICHAEL.

142 A COAST SCENE

CROME.

143 A LANDSCAPE, with windmill

MOUCHERON & LINGELBACH.

144 A LANDSCAPE, with figures

WYCK.

145 WILLIAM III. AND HIS STAFF

MONAMY.

146 A NAVAL ENGAGEMENT

HOBBEMA.

147 A RIVER SCENE

DE VLIENER.

148 A SEA-PIECE

ZUCCARELLI.

149 A RIVER SCENE

HOBBEMA (AFTER).

150 A WATERMILL

POWELL.

151 A SEA-PIECE

GRYEFF.

152 DEAD GAME—*a pair*

BORGOGNONE.

153 A PAIR OF BATTLE PIECES

R. DI TIVOLI.

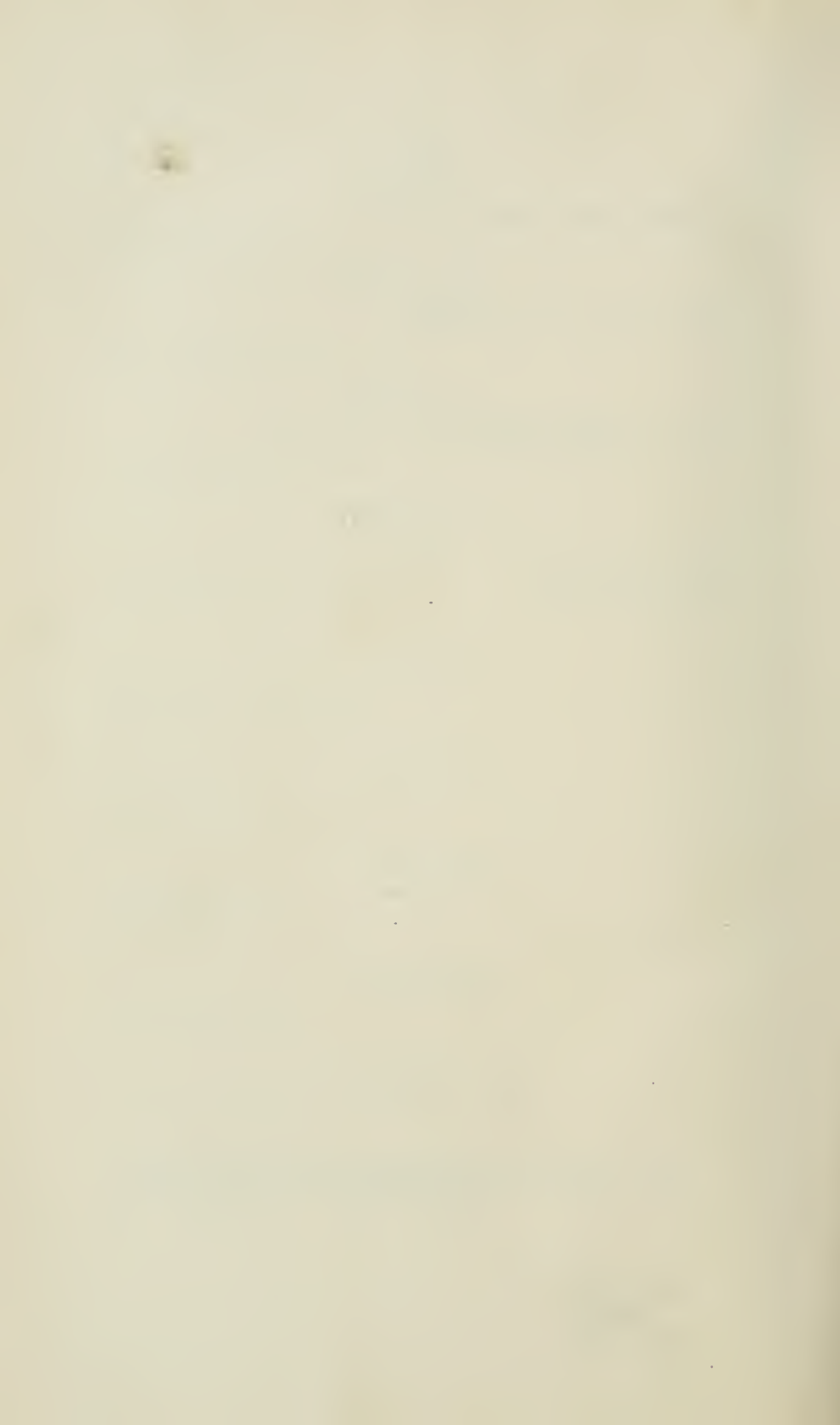
154 A LANDSCAPE, with animals

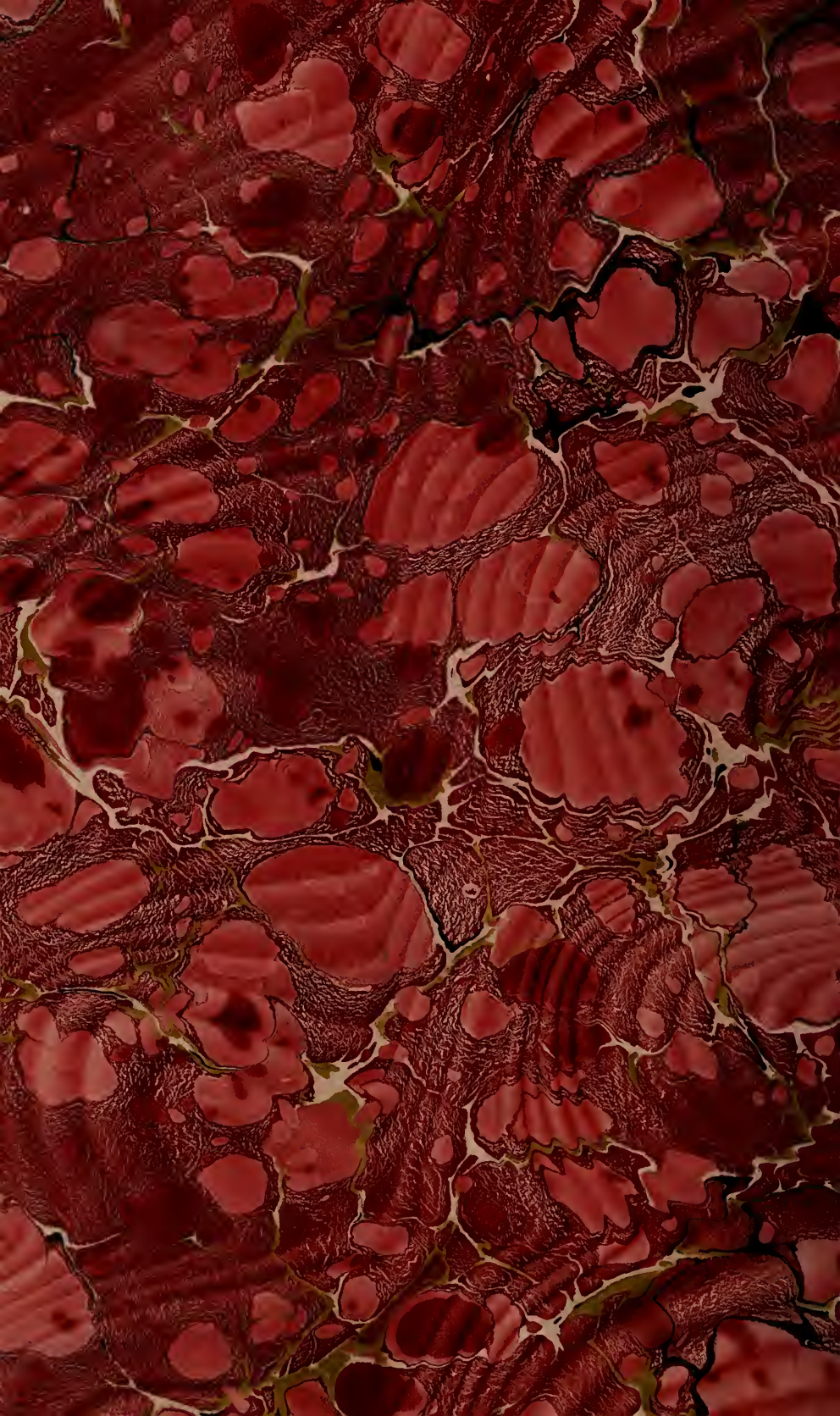
J. B. WEENIX.

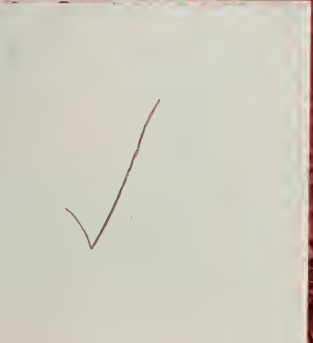
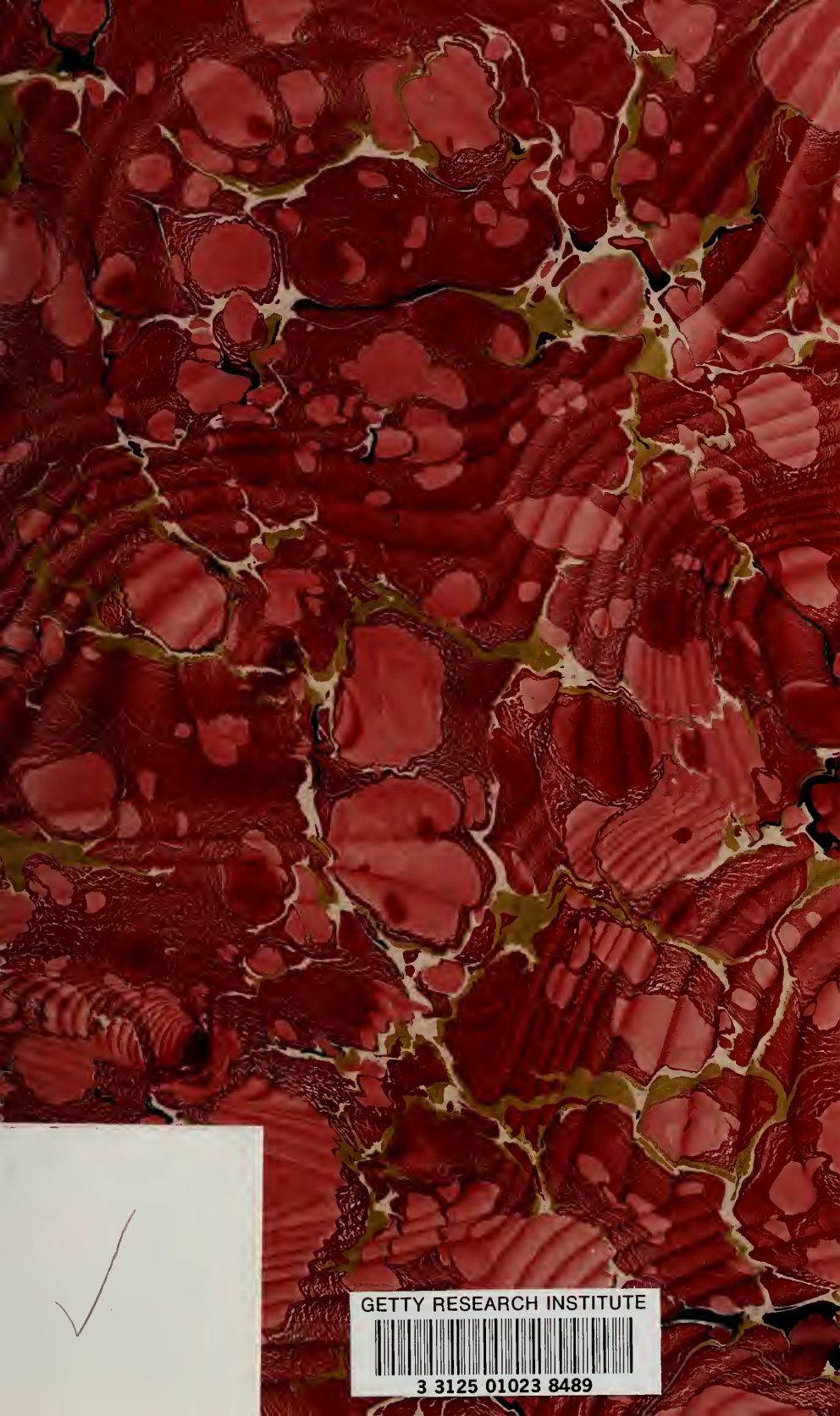
155 A HARBOUR SCENE

156 THE COMPANION

FINIS.







GETTY RESEARCH INSTITUTE



3 3125 01023 8489

